



*Conditioned room at CalPortland lab where project concrete cylinder samples are stored until ready for testing.*



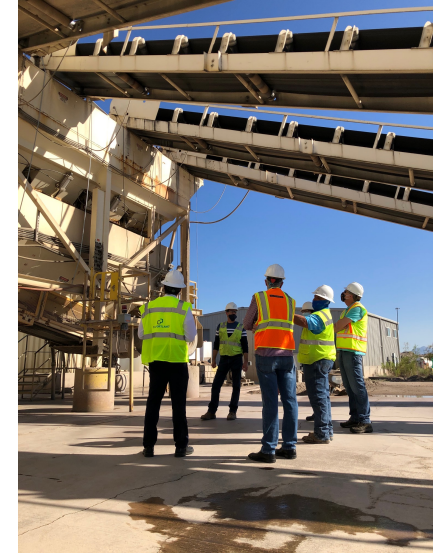
*CalPortland QC Tech explaining compression/strength testing apparatus.*



*CalPortland QC Tech, Ryan Ernst, discussing the condition of concrete cylinder breaks with architect Mark Yarish.*



*Admixture containment area at CalPortland Glendale plant – discussing admix uses.*



*CalPortland Glendale plant manager Robert Cantu discussing plant operations with CSI tech committee.*



*CalPortland QC Director, Lauro Rivas discussing coarse and fine aggregate conditioning, sampling and testing at CalPortland lab*